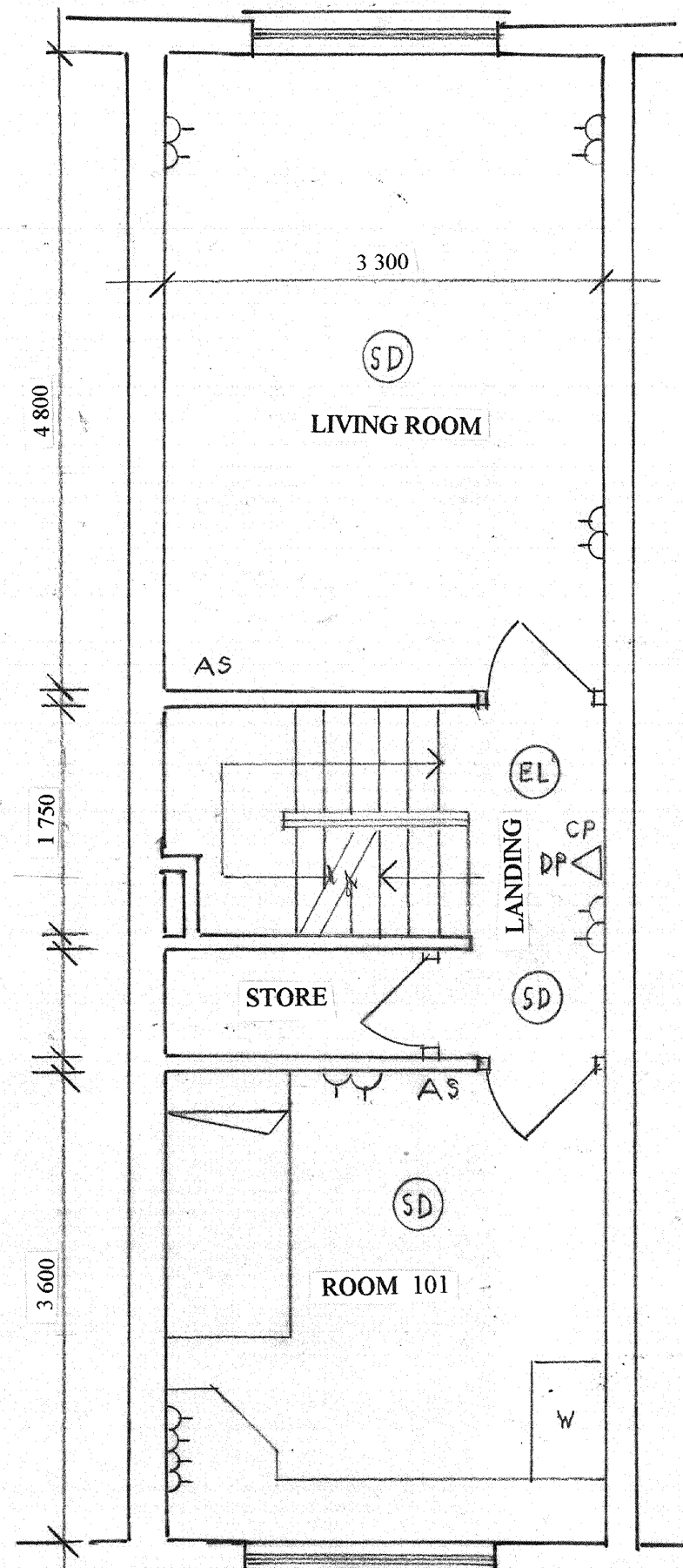
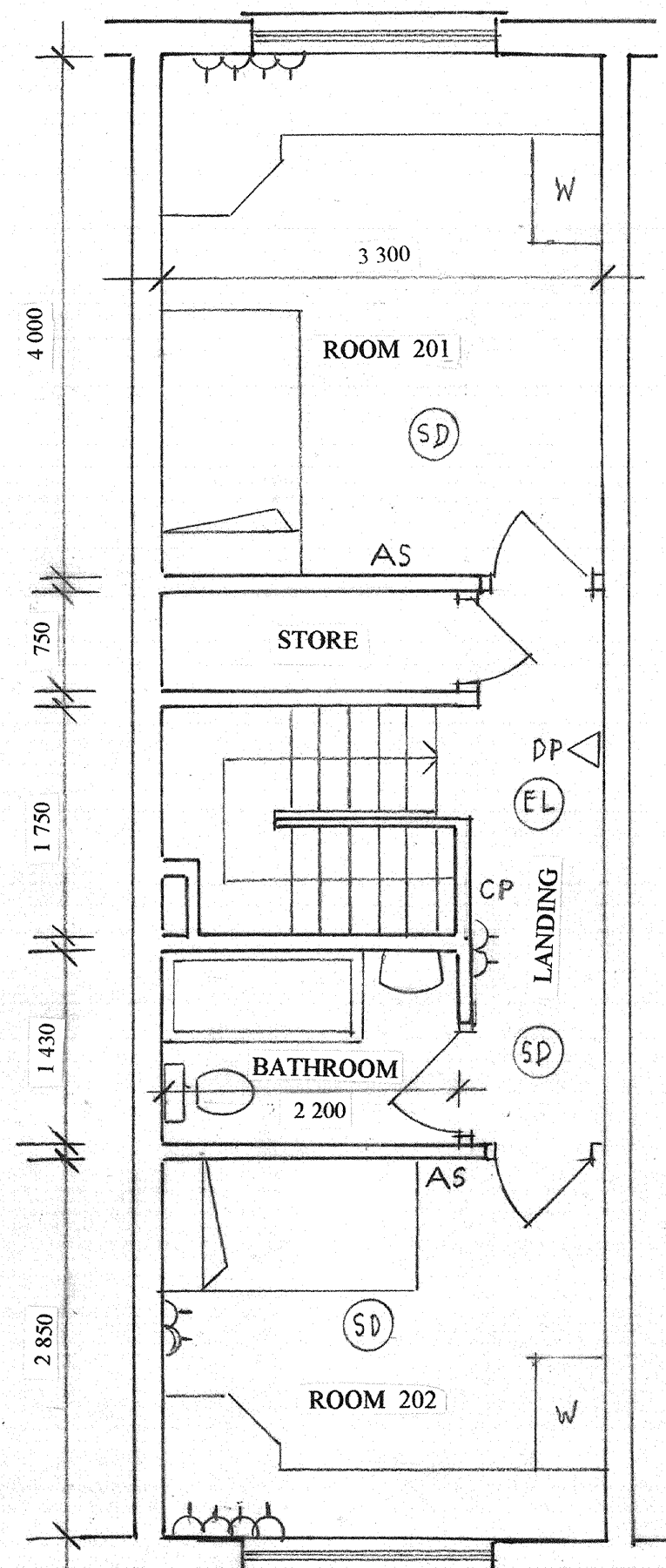


GROUND FLOOR PLAN

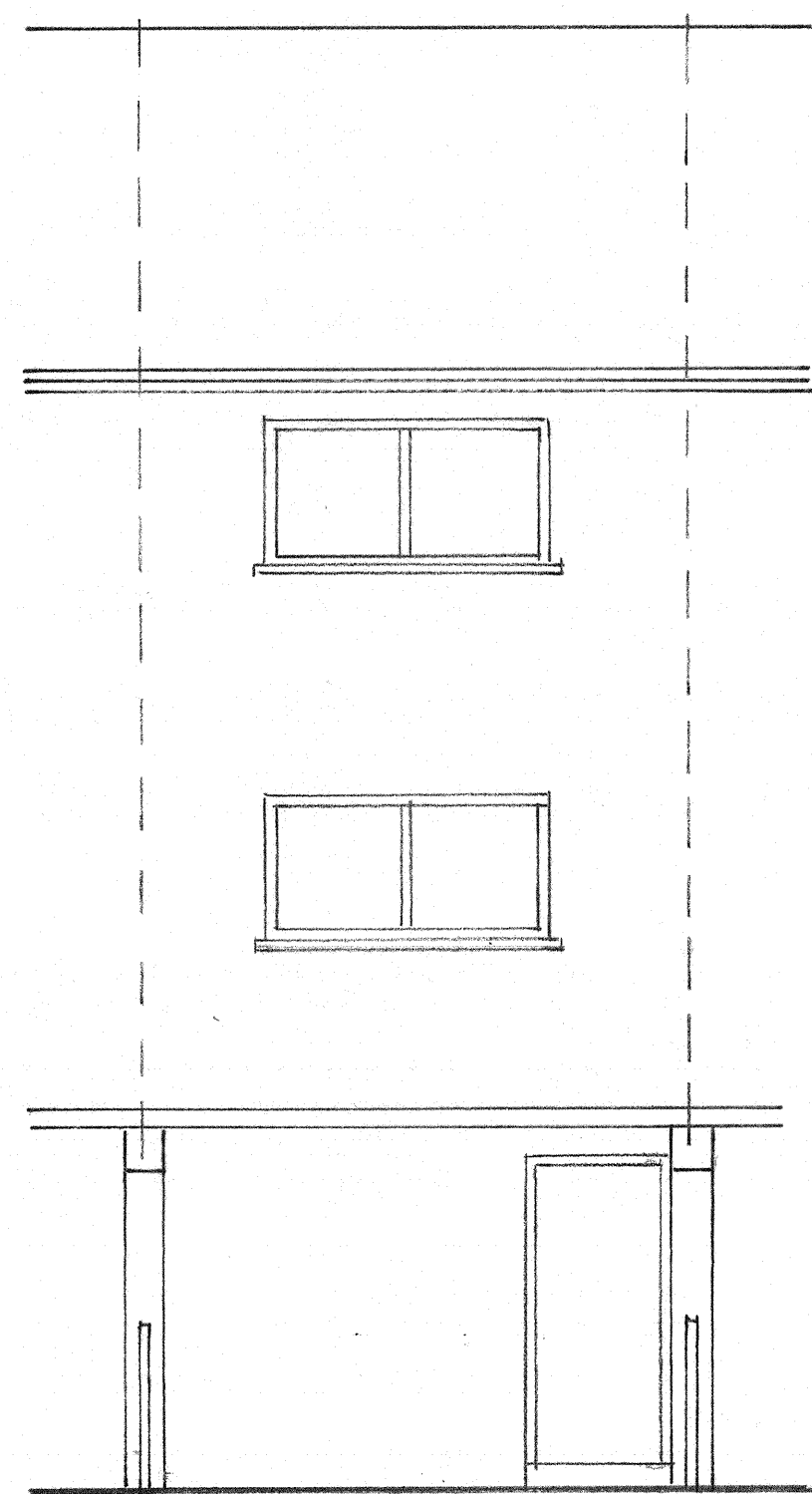
Total worktop length: 5.4m  
 Volume of base units: 1.3 cu.m  
 Volume of wall units: 0.5 cu.m



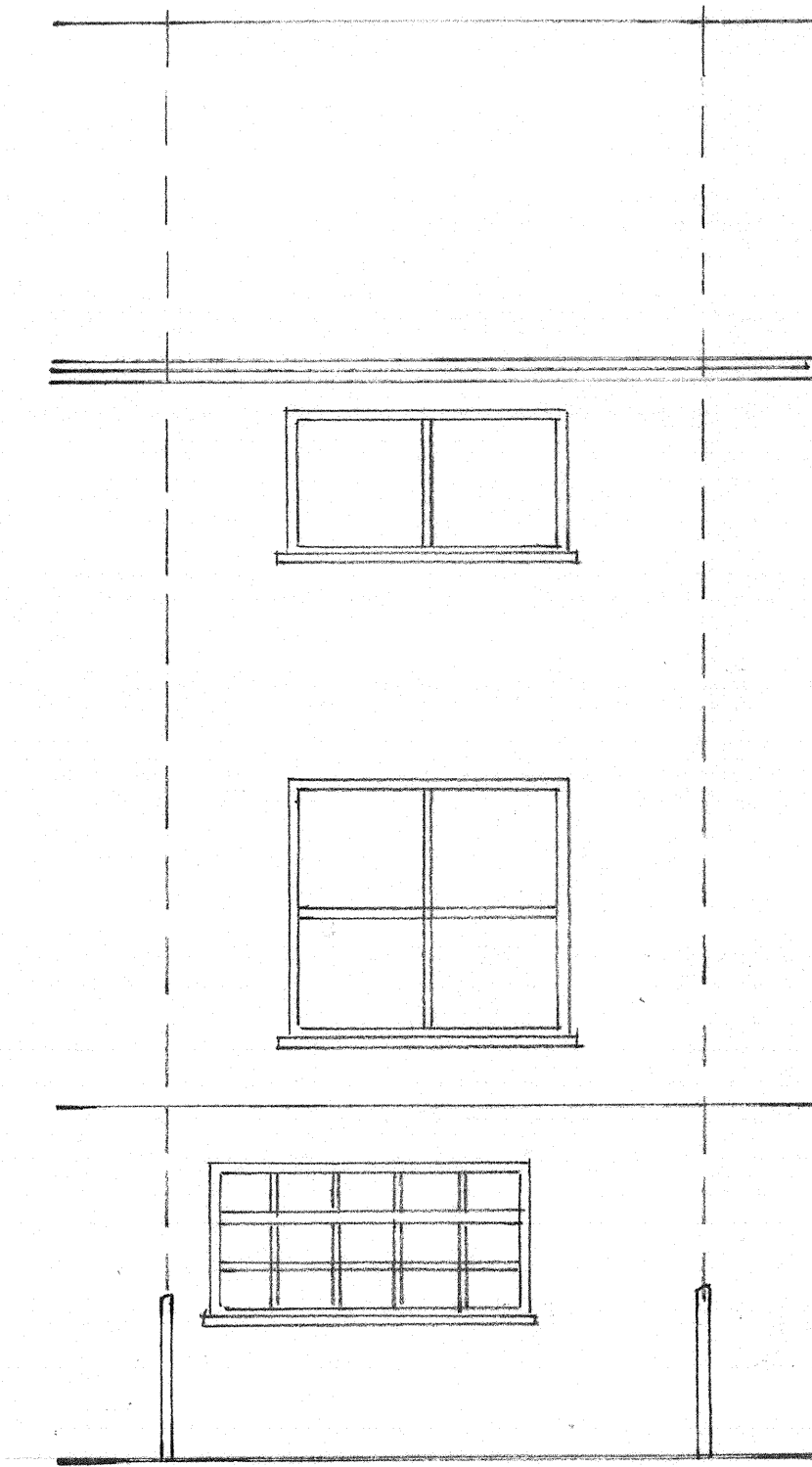
FIRST FLOOR PLAN



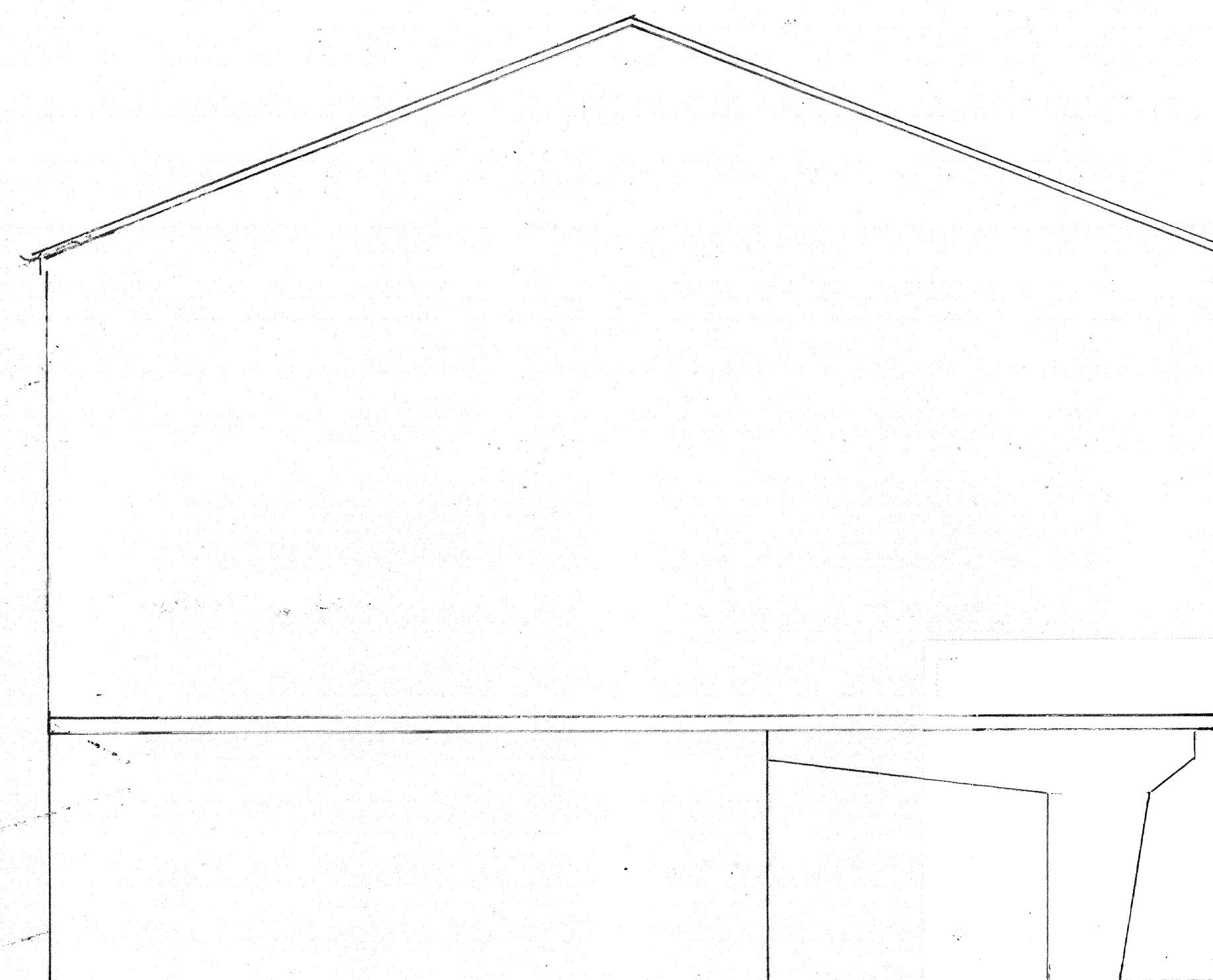
SECOND FLOOR PLAN



FRONT ELEVATION



REAR ELEVATION



SIDE ELEVATION

**Key of symbols**

- FD Fire door
- EW Escape window
- EL Emergency lighting
- CP Manual call point
- FAP Fire alarm control panel
- SD Smoke detector linked to whole house system
- HD Heat detector linked to whole house system
- AS Alarm sounder linked to whole house system
- SA Combined smoke detector/alarm, maybe linked or stand-alone
- HA Combined heat detector/alarm, maybe linked or stand-alone
- FB Fire blanket
- WE Water extinguisher
- FE Foam extinguisher
- DP Dry powder extinguisher
- SH Shower
- B Boiler
- WC Toilet
- WHB Wash-hand basin
- C Cooker
- S Sink
- F Fridge
- Electric socket outlet
- W Wardrobe

**MOLYNEUX SMITH  
 CHARTERED  
 ARCHITECTS**

54 GERTRUDE ROAD • WEST BRIDGFORD  
 NOTTINGHAM NG2 5DB  
 Tel: 0115 9822821 & 07973 181446

title:  
**ARRANGEMENT  
 AS BUILT**

**35 MANSTON MEWS . RADFORD . NOTTINGHAM NG7 3QY**

rev.	date	REVISIONS	scale	date
			1:50	14:12:15
			drawn by crms	checked by
			drawing no. 2245/AA(2) 01	