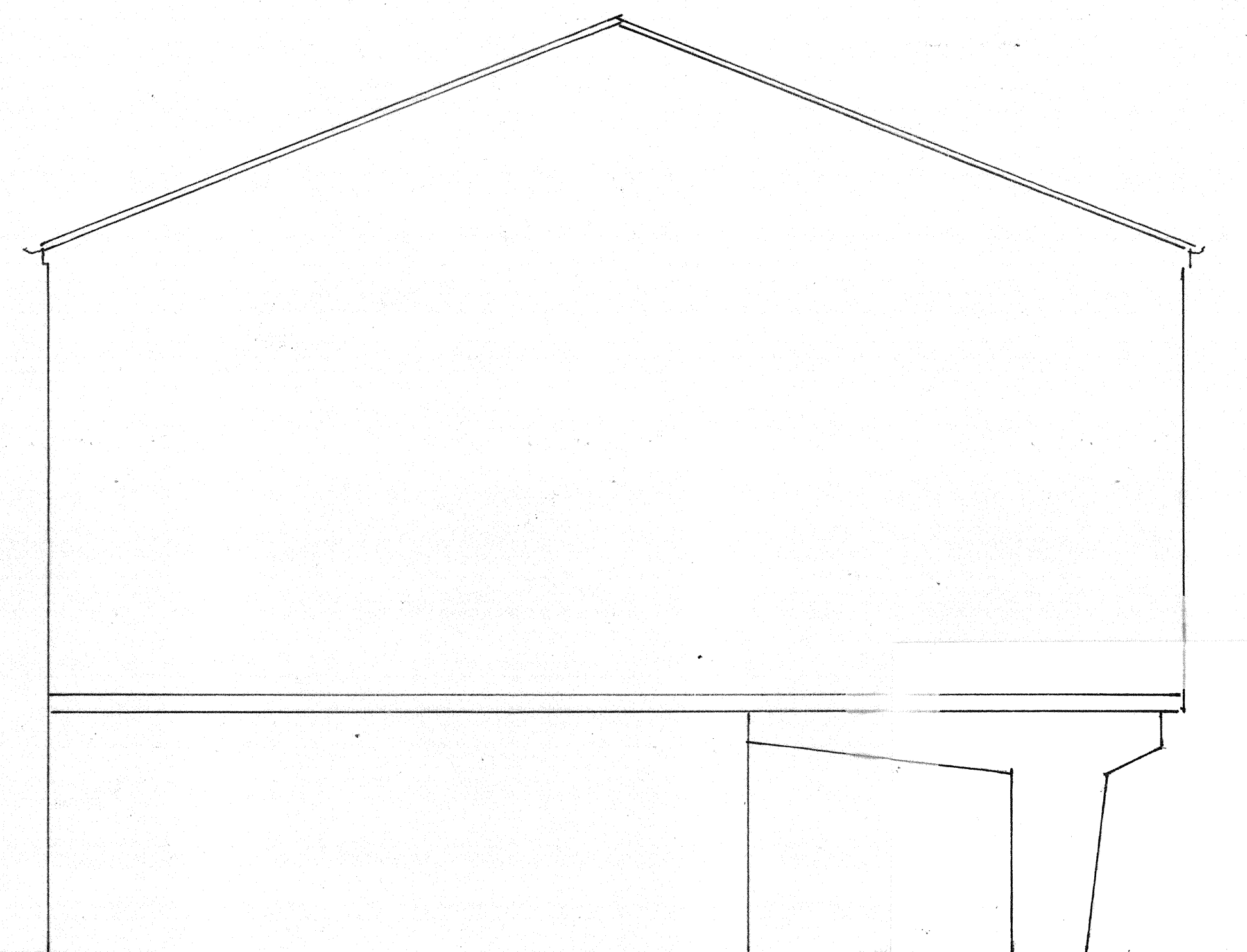
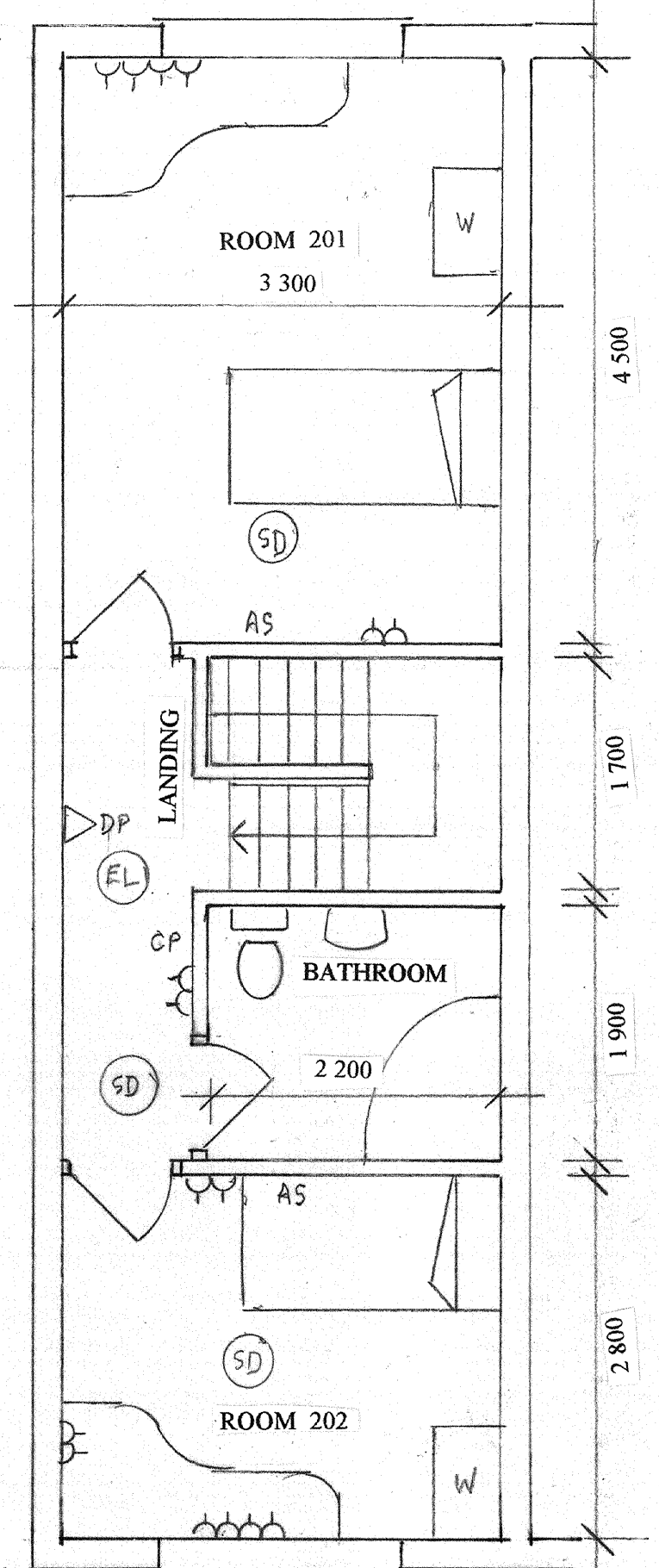
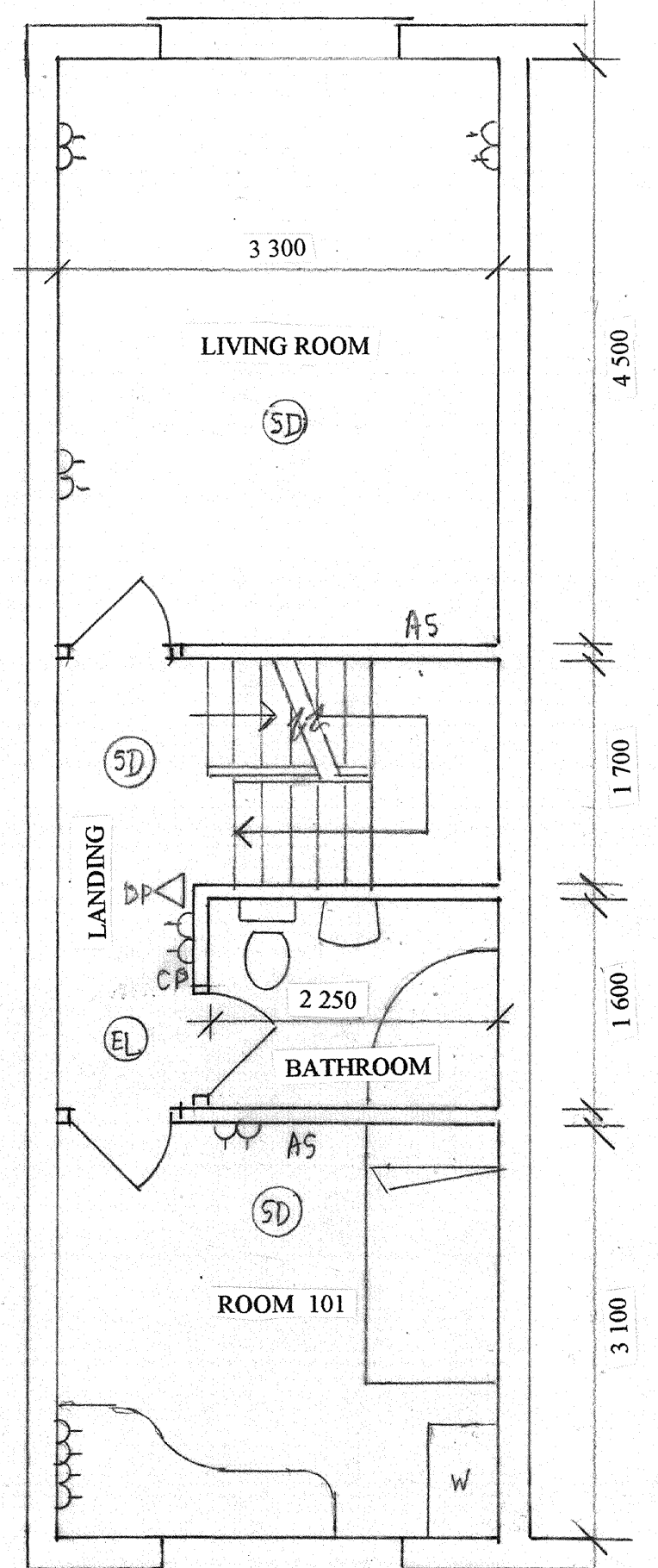


Total worktop length: 5.4m  
 Volume of base units: 1.3 cu.m  
 Volume of wall units: 0.5 cu.m



- Key of symbols**
- FD Fire door
  - EW Escape window
  - (EL) Emergency lighting
  - CP Manual call point
  - FAP Fire alarm control panel
  - (SD) Smoke detector linked to whole house system
  - (HD) Heat detector linked to whole house system
  - AS Alarm sounder linked to whole house system
  - SA Combined smoke detector/alarm, maybe linked or stand-alone
  - HA Combined heat detector/alarm, maybe linked or stand-alone
  - △FB Fire blanket
  - △WE Water extinguisher
  - △FE Foam extinguisher
  - △DP Dry powder extinguisher
  - SH Shower
  - B Boiler
  - WC Toilet
  - WHB Wash-hand basin
  - C Cooker
  - S Sink
  - F Fridge
  - ⊔ Electric socket outlet
  - W Wardrobe

GROUND FLOOR PLAN

FIRST FLOOR PLAN

SECOND FLOOR PLAN

SIDE ELEVATION

**MOLYNEUX SMITH  
 CHARTERED  
 ARCHITECTS**

54 GERTRUDE ROAD • WEST BRIDGFORD  
 NOTTINGHAM NG2 5DB  
 Tel: 0115 9822821 & 07973 181446

title:  
**ARRANGEMENT  
 AS BUILT**

11 MANSTON MEWS . RADFORD . NOTTINGHAM NG7 3QY

rev.	date	REVISIONS	scale	date
			1:50	14:12:15
drawn by crms			checked by	
drawing no. 2246/AA(2) 01				